



Coldwell Banker Kaiser would like to be one of the first to welcome you to the area! Since our founding in 1959, we have made it our business to stay up to the minute on Indianapolis and the surrounding areas. Over the years, we have grown with this exciting market, mastering all facets of the real estate field. The following is a brief glance at what Carmel has to offer you.

We look forward to learning about your needs.

Call us at (317) 844-1131



**COLDWELL  
BANKER &  
KAISER**



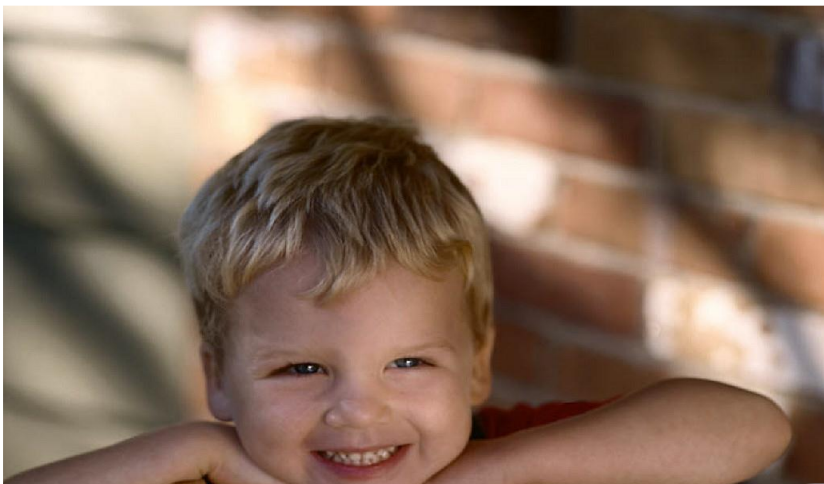
# CARMEL



**COLDWELL  
BANKER &  
KAISER**



# COMMUNITY PROFILE



**Carmel is located approximately 15 miles north of Indianapolis via Route 431 from I-465, and U.S. 31. Carmel is part of Hamilton County.**

---



---

**POPULATION FOR CARMEL:**

**82,000**

**(Population for Hamilton County:  
274,569)**

**Household Median Income  
\$96,692**

---



---

**GENERAL FACTS ABOUT INDIANA:**

**Capitol: Indianapolis  
Population: 6,516,922  
Nickname: Hoosier State  
Date of Statehood: December 11, 1816  
State Bird: Cardinal  
State Flower: Peony  
State Tree: Tulip Poplar  
Median Income: \$47,697  
Average Travel Time to Work: 27.3  
minutes**

**SCHOOLS:**

**Public:**

**Carmel Elementary School  
101 4<sup>th</sup> Ave. SE, Carmel 46032**

**Carmel High School  
520 E Main St., Carmel 46032**

**Carmel Middle School  
300 S Guilford Rd., Carmel 46032**

**Cherry Tree Elementary School  
13989 Hazel Dell, Carmel 46033**

**Clay Middle School  
5150 E 126<sup>th</sup> St., Carmel 46033**

**College Wood Elementary School  
12415 Shelborne Road, Carmel 46032**

**Creekside Middle School  
3525 W 126<sup>th</sup> St., Carmel 46032**

**Forest Dale Elementary School  
10721 Lakeshore Dr., Carmel 46033**

**Mohawk Trails Elementary School  
4242 E 126<sup>th</sup> St., Carmel, 46033**

**West Clay Elementary  
3495 W 126<sup>th</sup> St., Carmel 46032**

**Orchard Park Elementary School  
10404 Orchard Park S Dr., 46280**

**Prairie Trace Elementary School  
14200 N River Rd., Carmel 46033**

**Smoky Row Elementary School  
900 W 136<sup>th</sup> St., Carmel 46032**

**Towne Meadow Elementary School  
10850 Towne Rd., Carmel 46032**

**Woodbrook Elementary School  
4311 E 116<sup>th</sup> St., Carmel 46033**

**CARMEL CLAY SCHOOL WEBSITE:  
www.ccs.k12.in.us**

**Private:**

**Acorn Montessori School  
620 Kinzer Ave., Carmel, IN 46032**

**Options Charter School  
530 W. Carmel Dr., Carmel, IN 46032**

**Guerin Catholic High School  
15300 North Gray Road, Noblesville, IN 46062**

**Walnut Grove Christian Preparatory  
651 W. Main St, Apt. W, Carmel, IN 46032**

**Indiana Montessori Academy  
12760 Horseferry Rd., Ste 100, Carmel, IN 46032**

**Our Lady of Mt. Carmel School  
14598 Oakridge Rd., Carmel 46032**

---



---

**NEWSPAPERS:**

**Local:**

**Indianapolis Star (317) 444-4444**

**Indianapolis Business Journal  
(317) 634-6200**

**Current In Carmel Newspaper  
(317) 489-4444**

---



---

**HOSPITALS:**

**St. Vincent Hospital  
13500 N Meridian (317) 582-7000**

**St. Vincent Heart Center of Indiana  
10580 N Meridian St. (317) 583-5000**

**Clarian North Medical Center  
11700 N Meridian (317) 688-2000**

**Women's Hospital  
755 W. Carmel Dr. (317) 249-2703**

**Methodist Hospital  
1701 N Senate, Indianapolis (317) 962-2000**

**UTILITIES:**

**Electric:**

**Duke Energy (800) 521-2232**

**Gas:**

**Vectren Energy (800) 777-2060**

**Water/Sewer Billing:**

**Carmel Utilities (317)571-2442**

**Telephone:**

**AT&T (800) 742-8771**

**Cable:**

**BrightHouse Networks  
(317) 972-9700**

**Trash:**

**Republic (317) 917-7300**

---



---

**PUBLIC SERVICES:**

**Police Department:**

**Emergency 911  
Administration (317) 571-2500**

**Fire Department:**

**Emergency 911  
Administration (317) 571-2600**

**Sheriff Dept.: (317) 773-1872**

**Library: (317) 844-6711**

**Post Office: (317) 846-2489  
(800) 275-8777**

**Chamber of Commerce:  
(317) 846-1010**

**License Branch: (317) 846-5533**